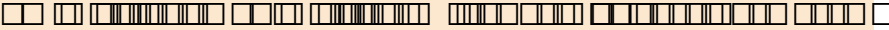


COST Action TD1210

2013 | 2017

KNOWeSCAPE

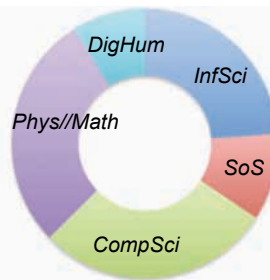


Objectives

- Analysis and models of knowledge spaces
- Maps as navigation tools through knowledge spaces
- Guidelines for implementing knowledge maps

Working Groups

- WG 1: Phenomenology of knowledge spaces
- WG 2: Theory of knowledge spaces
- WG 3: Visual analytics of knowledge spaces–knowledge maps
- WG 4: Data curation and navigation based on knowledge maps



Main Achievements

- Linking into international projects and networks, e.g. Europeana.
- Information retrieval and knowledge discovery: how can complex network theory be combined with NLP and semantic resources? **First paper**
- Semantic web technology: How to provide provenance for evolving classification systems? **Conference contribution**
- Types of visualizations suitable for knowledge maps. **WG1/3 workshop**

Gender Balance and Early Stage Researcher

- Objectives: ESR take responsibility in the Action according to percentage share in the Action. The same quota holds for gender.
- Status: 40% Female Participants, 10% ESR. Steering Committee: 30% Female 30 % ESR

Dissemination

- Leaflet/ and Website
- Special session at *Theory and Practice of Digital Libraries 2013* “COST Actions and Digital Libraries: between Sustaining Best Practices and Unleashing Further Potential”
- First WG meetings as satellite events at important conferences (WG 1/3, WG 4)

Materials,
Physics &
Nanosciences
(MPNS)



Participating countries: 25

AT, BE, BG, CH, DE, DK, EL, ES, FI, FR, HR, HU, IE, IL, IS, IT, MK, MT, NL, PL, PT, RS, SI, SE, UK

Internat. Collaboration:

US (in preparation)

Contact details

Chair of the Action

Andrea Scharnhorst
Andrea.scharnhorst@dans.knaw.nl

Domain Committee Rapporteur

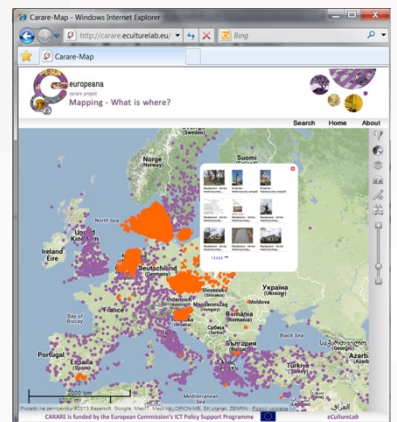
Joaquim Manuel Vieira
jvieira@ua.pt

Science Officer (COST Office)

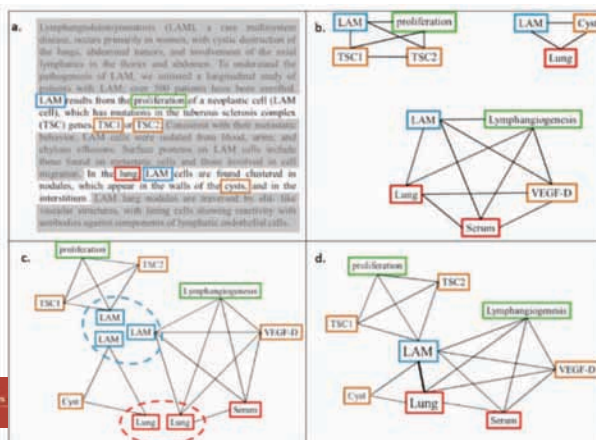
Caroline Whelan
Caroline.Whelan@cost.eu

Action Website

www.knowledgescape.org



Geographic Knowledge Map.
Courtesy F. Zakrajsek, CARARE, Europeana



Knowledge Graph. Courtesy T. Di Matteo
Information Retrieval based on Natural Language Processing, Semantic Resources and Complex Networks



COST is supported by the EU RTD Framework Programme



ESF provides the COST Office through a European Commission contract