

eCultureMap – Link to Europeana Knowledge

Franc J. Zakrajsek, Vlasta Vodeb

Contact: franc.zakrajsek@guest.arnes.si

Cultural mapping is an assignment of cultural objects and resources to a geographical or non-geographical knowledge map.

European digital library - Europeana¹ is connecting a large number of digital cultural objects (currently about 30 million) from European museums, libraries, archives and multi-media institutions. The content is ready for use by the general public, professionals, students, tourists, ... The eCultureMap re-uses this content as a geographical knowledge map. The pilot of the eCultureMap has been developed within the Carare EU project: Connecting ARchaeology and ARchitecture in Europeana, funded under the European Commission's ICT Policy Support Programme².

There were two objectives when developing the pilot map:

- First, what are the benefits and advances when browsing huge digital cultural content as is Europeana, geographically and the use related spatial tools;
- Second, what are the problems and bottlenecks when we geographically “aggregate” digital cultural content from several and different cultural collections originating from different cultural sectors, different institutions, different geographical coordinate systems, and from several different countries.

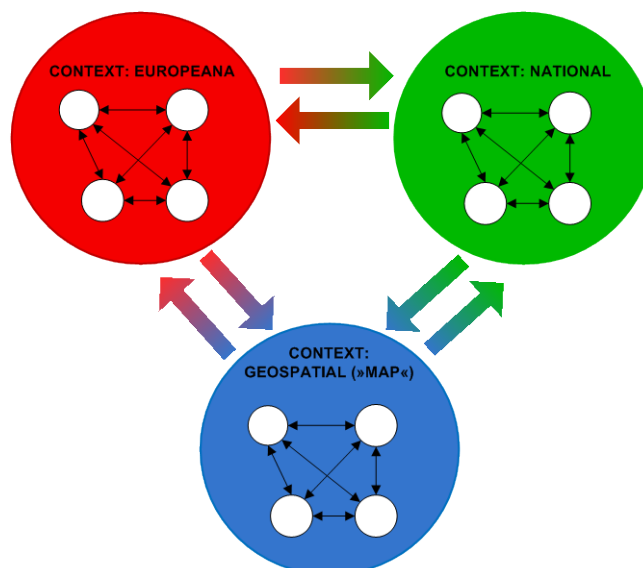


Fig. 1. The Concept of eCultureMap

The pilot map can be browsed at <http://carare.eculturelab.eu/> and also accompanying videos are available³. It currently consists of about 1.5 million of digital objects. Spatial accuracy of the

¹ <http://www.europeana.eu>

² <http://www.carare.eu/>

³ <http://www.youtube.com/watch?v=hZ6vEbxRy7s>

geographical coordinates of the cultural items are of two kinds, first is below 5-10 meters in the real world which is appropriate for spatial navigation, and the second which is above 10 meters. The second one we have prepared by using geoparsing methods and tools. The user interface of the pilot map has four main components: mapping, route planning, search, and mobile. The route planning component of the pilot map is an interesting and usable tool and could be used in real time when travelling by bus, car or walking with a mobile device.

The map undoubtedly enriches user experience and it proves the added value of Europeana and other cultural knowledge assets for cultural tourism, creative industries, education, and overall promotion of culture.

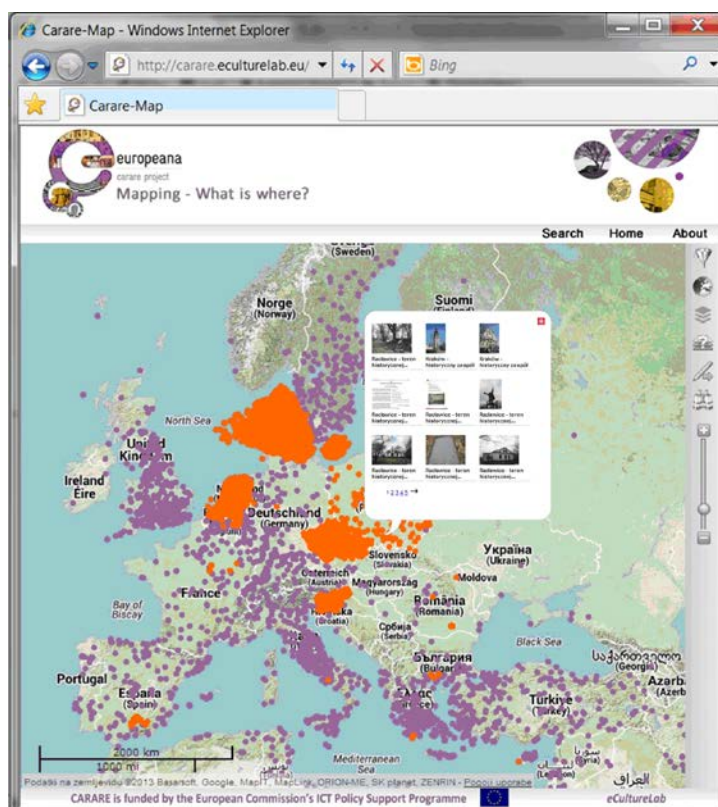


Fig. 2. eCultureMap, overview (<http://carare.eculturelab.eu/>)